



## SUPERSTREETS INTERSECTION IDEAS

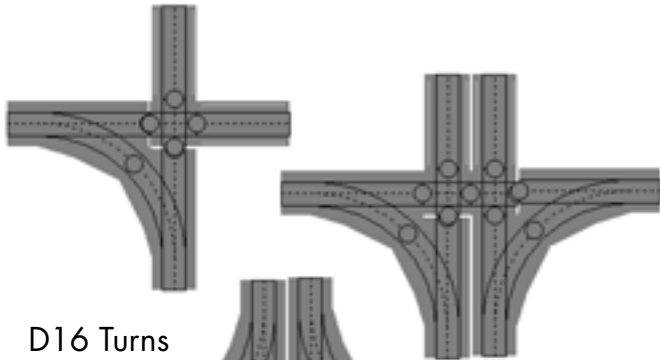
*With the introduction of our D16 and D21 Turn Roadways you can build more interesting and realistic intersections. Here are just a few basic turns and intersections you can create using the standard Roadway pieces. With new Adjustable Straight Roadway you have even more flexibility to create almost any layout design.*

### Basic Roadway Components

- |   |  |
|---|--|
| 6-22592 <b>NEW</b> SuperStreets D16 Turnout Roadways (L&R)                            | 6-21282 SuperStreets 2.5" Straight (Curve to Curve Connector 4 Pack) |
| 6-22595 <b>NEW</b> SuperStreets D21 Turnout Roadways (L&R)                            | 6-22598 <b>NEW</b> SuperStreets Adjustable Straight Roadway (2 Pack) |
| 6-21287 SuperStreets Y Roadway  | 6-21430 SuperStreets D16 Curve                                       |
| 6-21286 SuperStreets Intersection   | 6-21281 SuperStreets D21 Curve                                       |
| 6-21431 SuperStreets 10" Straight   | 6-21163 SuperStreets 10" FasTrack Grade Crossing                     |
| 6-21433 SuperStreets 5" Straight (4 Pack)   | 6-21283 SuperStreets 10" Tubular Track Grade Crossing                |
| 6-22566 <b>NEW</b> SuperStreets 2.5" Straight (Straight to Straight Connector 4 Pack) | 6-21164 SuperStreets 10" Transition to FasTrack                      |
| 6-21261 SuperStreets 2.5" Straight (Straight to Curve Connector 4 Pack)               | 6-21284 SuperStreets 10" Transition to Tubular                       |
|   | 6-22379 SuperStreets Barricade (2 Pack)                              |

### Intersections

The new D16 and D21 Turns are engineered to make the simplest possible intersection. A pair of D16 turns connect directly to each other and an Intersection to create a simple turn.



D16 Turns

Double that arrangement and you create a single lane road crossing a two lane road.

Double it again and you have a complete four way intersection.

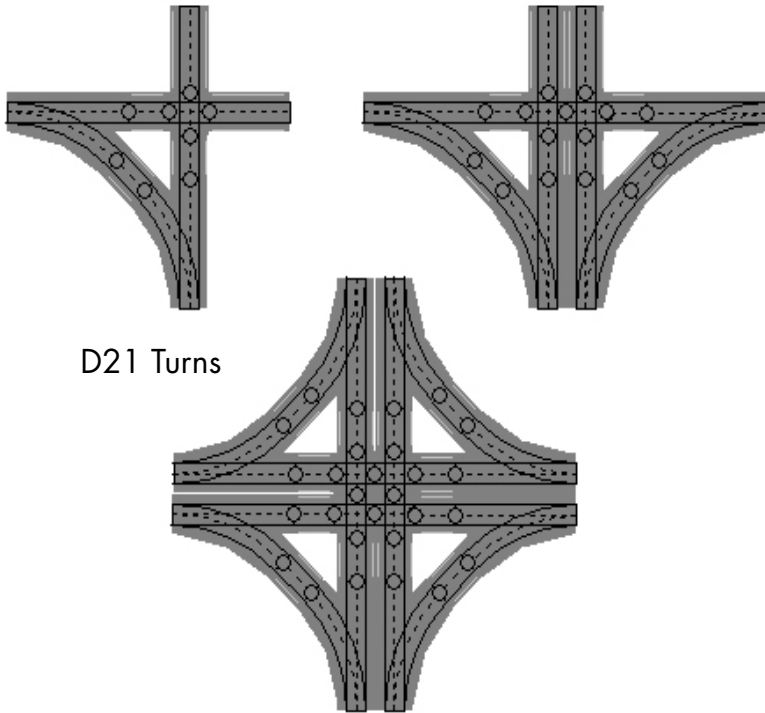
*The Layout drawings in the document were created with RR Track Lite Software for SuperStreets, an easy-to-use graphical layout planning tool - built on the excellent features of the RR Track, R&S Software's powerful layout planning program.*

*RR Track Lite Software for SuperStreets is available FREE for download at [http://www.k-line.lionel.com/KbL\\_Products/superstreets\\_railroadster\\_planning\\_guides.cfm](http://www.k-line.lionel.com/KbL_Products/superstreets_railroadster_planning_guides.cfm)*





## Intersections



D21 Turns

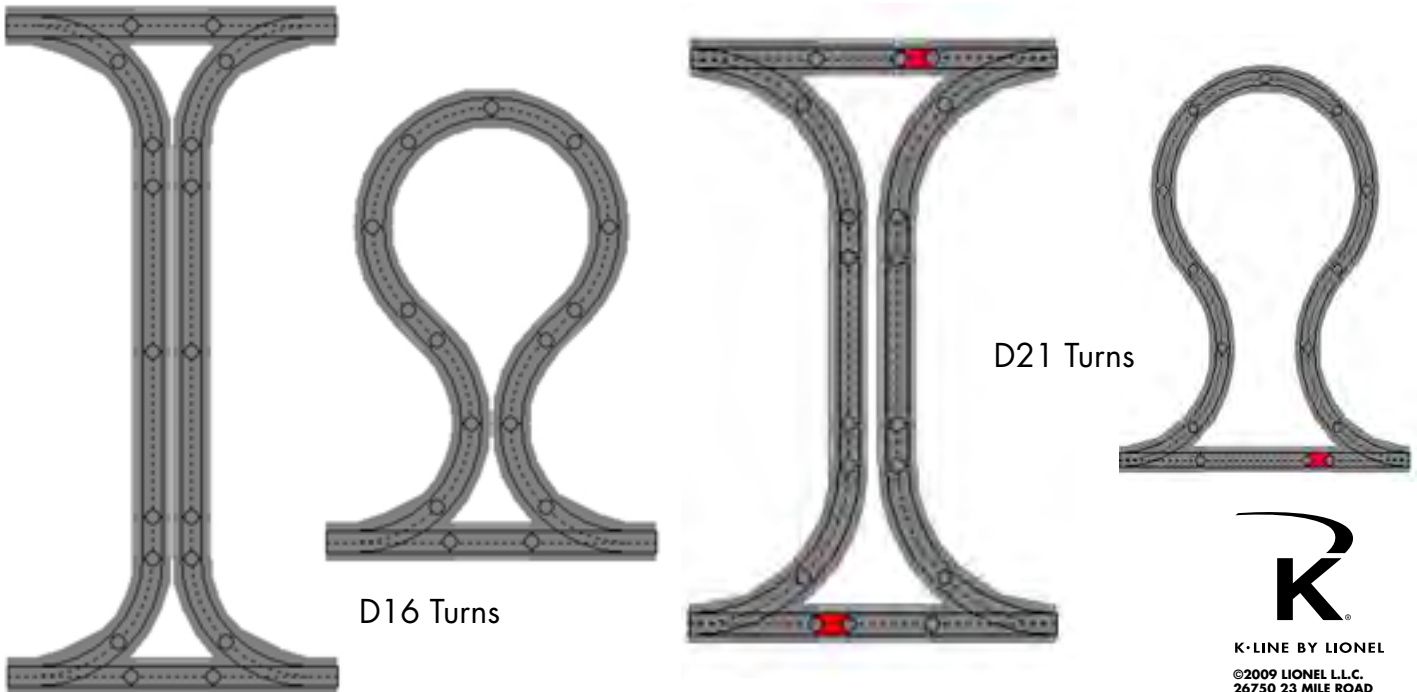
The same intersections can be made using pairs of D21 turns.

With the D21, the new 2.5" Straight connects both the straight direction to the Intersection and the two turn lanes to each other.

Note: The red highlighted Roadway sections below are custom sizes created with the 6-22598 Adjustable Straight Roadway.

## Through Street and Cul de Sac

Both the D16 and D21 can make a one or two lane through street between parallel roads. With the D16s a 5" Straight spans the distance between the Turns. With the D21s you also have to add a section of Adjustable Straight Roadway (highlighted in red).



D16 Turns

D21 Turns



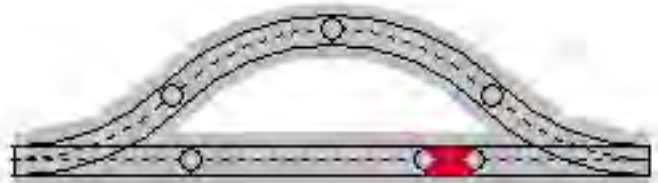


**Drive-Thrus**

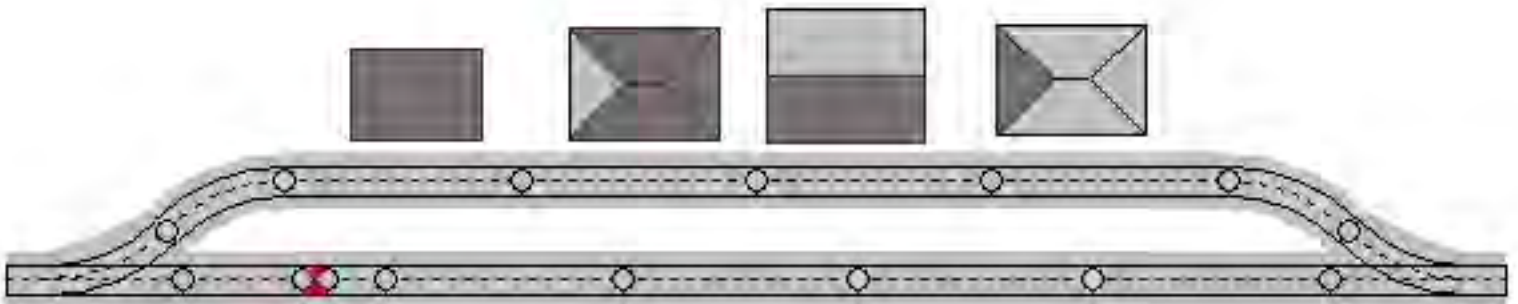
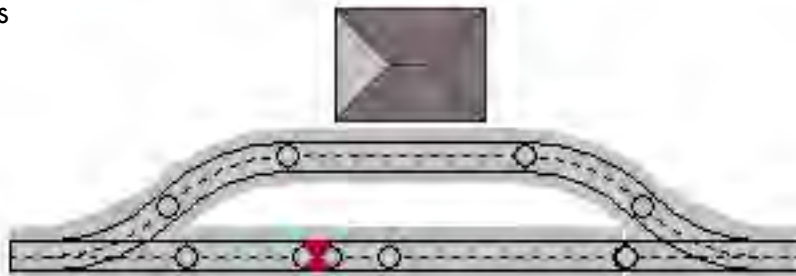
It is easy to create a drive-thru lane on your layout. It's great for gas stations, banks, fast food or even a whole row of drive- thru businesses



D16 Turns



D21 Turns



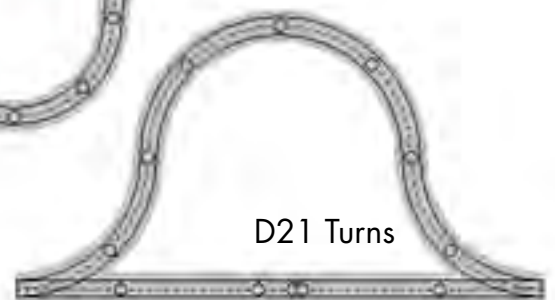
**Forward and Reverse Loops**



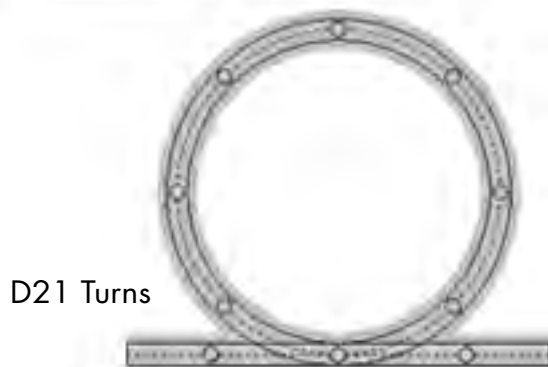
D16 Turns



D16 Turns



D21 Turns



D21 Turns

